

♩ ≈ 88

crotales

Musical staff with a whole rest in the bass clef and a whole rest in the treble clef.

9

Musical staff with notes and dynamics *p*, *mp*, and *pp*.

13

Musical staff with notes and dynamics *p* and *mp*.

15

Ⓐ ♩ ≈ 100

Musical staff with notes and dynamics *pp*, *p*, *mp*, and *pp*.

17

Musical staff with notes and dynamics *ppp*, *p*, *pp*, and *p*.

19

Musical staff with notes and dynamics *mp*, *pp*, and *p*.

21

Musical staff with notes and dynamics *pp*, *p*, *pp*, and *p*.

23

Ⓑ ♩ ≈ 90

Musical staff with notes and dynamics *p*.

29

Musical staff with triplets and dynamics *p*, *mf*, and *pp*.

34 © $\text{♩} \approx 78$ $\text{♩} \approx 90$

mp *f* *pp*

39 (D)

mf *f* *p*

45 $\text{♩} \approx 120$

mf

54 (E)

p *pp* *mf*

61

p *pp* *mf* *p*

68 (F) $\text{♩} \approx 104$

pp *mf* *dim...*

75 (G)

p *pp* *mf* *p* *mf* *p* *mf dim...*

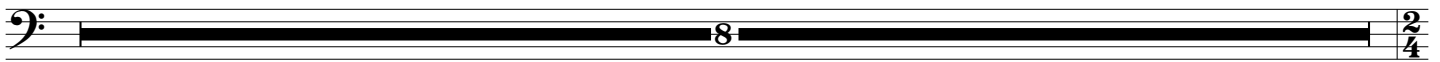
81

p *pp* *p < f > p* *p < f > p* *p < f >*

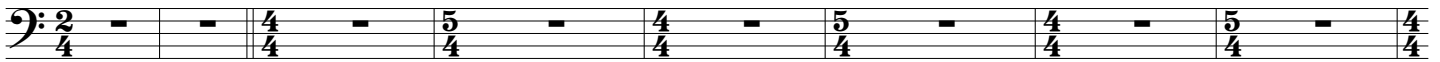
86

p *mf* *dim...* *p* *pp*

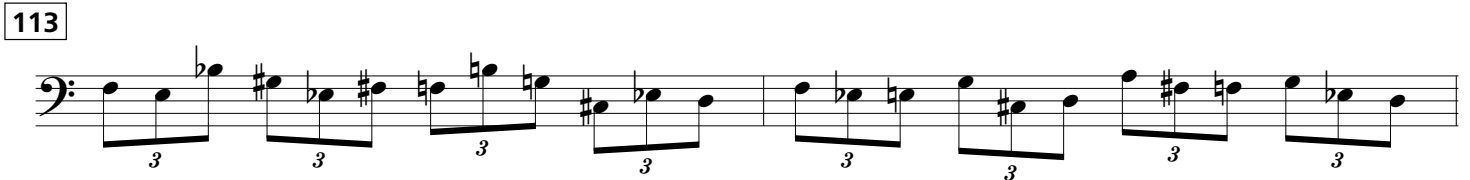
94 (H)



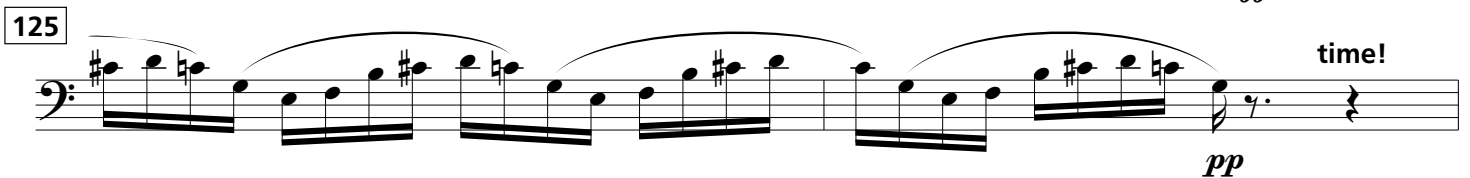
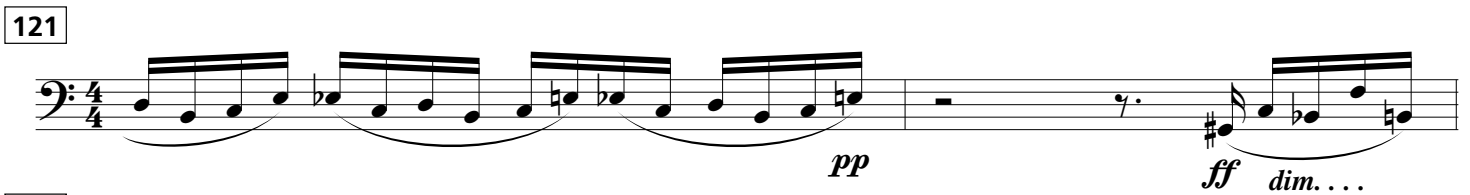
102 (I) ♩ ≈ 118



110 trumpet 1 (J) ♩ ≈ 104



119 (K) ♩ ≈ 128



127

♩ ≈ 112

Ⓛ

132

134

140

Ⓜ

149

flutes, piccolo

151

♩ ≈ 104

Ⓝ

153

156

159

Ⓞ ♩ ≈ 98

165

Musical notation for measure 165, bass clef. The measure is divided into five parts with time signatures 3/4, 4/4, 3/4, 4/4, and 3/4. It features a series of eighth and sixteenth notes, including a triplet of eighth notes. A dynamic marking of *f* is present below the notes.

169

Musical notation for measure 169, bass clef. The measure is divided into five parts with time signatures 3/4, 4/4, 4/4, 4/4, and 3/4. It features a series of eighth and sixteenth notes, including a triplet of eighth notes. A dynamic marking of *ff* is present below the notes.

171

Musical notation for measure 171, bass clef. The measure is divided into three parts with time signatures 3/4, 4/4, and 7/8. It features a series of eighth and sixteenth notes, including a triplet of eighth notes. A dynamic marking of *ff* is present below the notes.

173

Musical notation for measure 173, bass clef. The measure is divided into three parts with time signatures 7/8, 4/4, and 4/4. It features a series of eighth and sixteenth notes, including a triplet of eighth notes. A dynamic marking of *ff* is present below the notes, and a circled *P* (piano) marking is above the notes. A hairpin dynamic marking transitions from *ff* to *p*.

176

Musical notation for measure 176, bass clef. The measure is a whole rest, indicated by a thick black bar across the staff. The number 20 is written below the bar.

196 Bassoon 1

196 **Q**

198 $\text{♩} \approx 86$

mf *pp*

200 *simile*

202

204 **R** $\text{♩} \approx 96$

212 **S** $\text{♩} \approx 108$

215

Musical notation for measure 215 in bass clef, 5/4 time signature. The measure contains a series of eighth notes with various accidentals, including a trill. A dynamic marking of *ff* is present below the staff.

216

Musical notation for measure 216 in bass clef, 4/4 time signature. The measure contains a series of eighth notes with various accidentals, including a trill. A dynamic marking of *ff* is present below the staff.

217

Musical notation for measure 217 in bass clef, 4/4 time signature. The measure contains a series of eighth notes with various accidentals, including a trill. A dynamic marking of *ff* is present below the staff. A tempo marking of $\bullet \approx 88$ is shown above the staff.

218

Musical notation for measure 218 in bass clef, 4/4 time signature. The measure contains a series of eighth notes with various accidentals, including a trill. A dynamic marking of *ff* is present below the staff.

220

Musical notation for measure 220 in bass clef, 4/4 time signature. The measure contains a series of eighth notes with various accidentals, including a trill. A dynamic marking of *ff* is present below the staff. A tempo marking of $\bullet \approx 98$ is shown above the staff.

226

Musical notation for measure 226 in bass clef, 4/4 time signature. The measure contains a series of eighth notes with various accidentals, including a trill. A dynamic marking of *p* is present below the staff. A tempo marking of $\bullet \approx 88$ is shown above the staff. A circled 'U' is present above the staff. A circled 'V' with the text 'crotales' is present above the staff.

235

Musical notation for measure 235 in bass clef, 4/4 time signature. The measure contains a series of eighth notes with various accidentals, including a trill. A dynamic marking of *mp* is present below the staff. A dynamic marking of *pp* is present below the staff.

238

Musical notation for measure 238 in bass clef, 4/4 time signature. The measure contains a series of eighth notes with various accidentals, including a trill. A dynamic marking of *p* is present below the staff. A dynamic marking of *mp* is present below the staff. A dynamic marking of *pp* is present below the staff. A circled 'W' is present above the staff.

241

Musical notation for measure 241 in bass clef, 4/4 time signature. The measure contains a series of eighth notes with various accidentals, including a trill. A dynamic marking of *pp* is present below the staff.